



The S2-M with GPRS module has been designed with accuracy and reliability in mind and benefits from the integration with the Orsis WRFO S2-NR communications module for remote monitoring and data transmission via GPRS protocols.

The S2-M is a compact and secure domestic style, single phase electric meter that delivers a cost effective solution for one or two rate domestic and PV applications that enables the monitoring of both generation and export Kwh.

The Kwh energy data is transmitted to the Orsis back office system for data validation. The energy data is forwarded to energy suppliers, Data Collectors/Aggregators, PV marketplace and the Orsis Sunrise PV Portal.

The data retrieved can be used by the consumer to understand their energy consumption/generation levels and manage their fiscal and environmental cost from the information provided.

Features

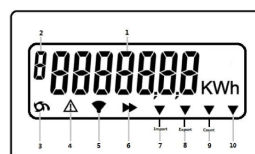
Accuracy Class B MID & IEC	12kV impulse withstand
KWh Import or KWh Import/Export	High security, compact design (130mm x 140mm High x 45mm Deep)
MID Approved 2004/22/EC	BS Double
Large digit (9.8mm) display with chevron information indication	Permanently fixed main cover
Extensive security data	IP53 in accordance with IEC 60529:2004
Communications as standard	

Security Features

- The meter stores all registration and security data to non-volatile memory
- All data is retained for the life of the meter
- Reverse run event count
- Reverse run energy total
- Reverse run indication on LCD (Meter Display)
- Power fail count
- Elapsed time count
- Terminal cover removal count (on power)

Displays

- The liquid crystal display is programmed to show "Segment Test" and Cumulative kWh import.
- High contrast 9.8mm x 3.5mm display with wide viewing angle



Technical Information

Current range	0.5 - 10(100)A
Voltage range	175—275V
Frequency	50Hz
System Connection	1 Phase, 2 Wire
Start Current	0.004Ib
Reference Voltage	230V
Accuracy	Class B MID & IEC
IrDA Baud Rates	300 — 9600
Current circuit power consumption	≤ 1.5W
Voltage circuit power consumption	≤ 1.5W
Certification	MID Approved 2004/22/EC
Temperature	-25°C—55°C (Operational Range), -25°C—85°C (Storage)
Humidity	Annual mean 75% (for 30 days spread over one year, 95%) Minimum value 5%, Maximum value 95%
Weight	650 grams (combined weight of meter and module)
Display Area	50 x 17mm
Case	IP53 to IEC62059:1989
Dimensions	170mm (H) x 120mm (W) x 45mm (D) - [155mm (W) incl antenna]
RoHS	Complied
REACH	Complied

Approved to **EN 62053-21:2003**

Comply with EMC standard **EN 50081-1:1992**

