

Energy Management

Split core current sensors

Type CTV2X

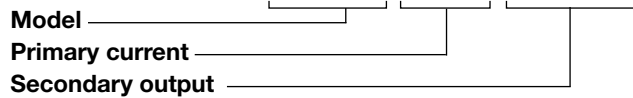


- Split core current sensor for retrofit applications
- Accuracy class 1%
- 0.333V standard secondary output

Product description

Split core current sensor with compact dimensions, suitable for retrofit applications when used in combination with EM21-72V energy meter.

How to order **CTV2X 100A 333MV**



Type Selection

Primary current

100A: 100A primary current input

Secondary output

333MV: 333mV secondary output voltage

Specification

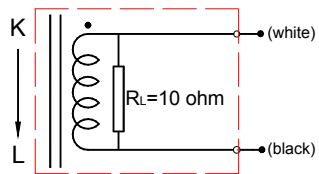
Electrical specifications

| | |
|---------------------------------------|--------------------------------|
| Rated Primary Current | 100A (1-120) |
| 50/60Hz | 300A max |
| Current (continuous) | 384 ± 10Ω max |
| Winding DC resistance at 20°C | 333mV (resistor inside the CT) |
| Secondary Output at Rated Current | 1% |
| Accuracy | 0.5% |
| Linearity | ≤2° |
| Phase error at rated current range | from -40 to 65°C |
| Operating temperature range | from -45 to 85°C |
| Storage temperature range | 2500V/1mA/1min |
| Dielectric withstand voltage (Hi-pot) | 5kV Peak |
| Impulse withstand voltage | DC500V/100MΩ min |
| Insulation Resistance | 660V |
| Max primary cable system voltage | |

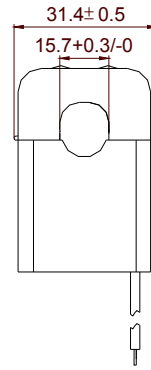
Mechanical specification

| | |
|------------------|--|
| Housing material | PP6331 |
| Opening Angle | 180 degree |
| Output terminal | UL1007 24AWG (0.20mm ²) PVC wire |
| Approx weight | 66g |
| Approvals | CE, cURus |

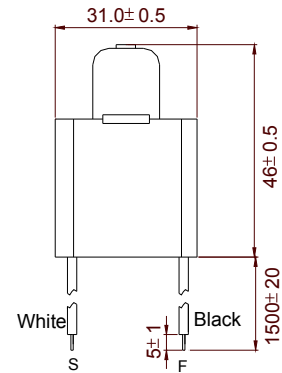
Wiring diagram



Dimensions



Front view



Left view

