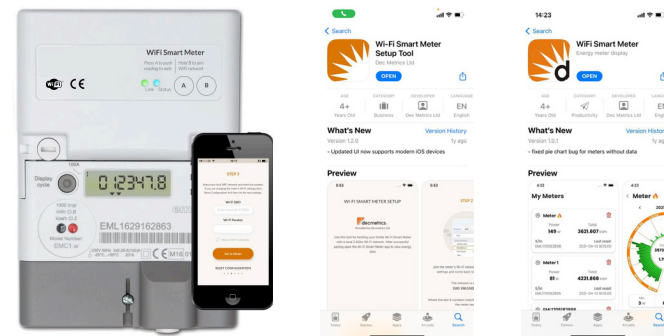


- 100A
- Surface Mounted
- MID Approved (for billing)
- WiFi enabled version of the popular CM100LCD
- Simple setup for Apple and Android devices
- Monitor energy usage from anywhere
- Energy data stored securely in the cloud
- No ongoing subscriptions
- Billing accurate meter readings
- Perfect for Solar Installations and Residential Energy Monitoring (Home Office, Garden Rooms, Hot Tubs, etc.)
- Anti-tamper cover version available (EML-WF-ETC)
- 5 Terminal version available (see image) for switching external loads, eg. night storage, without the need for an additional time clock (EML-WF-5T)



<b>WiFi Module</b>	ESP8266 IC	802.11 b/g/n 2.4 Ghz only	
		Soft-AP	
		Ultra low power consumption	
<b>Electrical</b>	Voltage	Nominal voltage	220V - 240V
	Frequency	Nominal frequency	50Hz or 60Hz
		Frequency variation	+ - 5%
	Current	Maximum (Imax)	100A
<b>Metrology</b>	Accuracy	Active energy	Class B, 20 EN 50470 1-3
		Reactive energy	Class 2, to IEC 62053-23

Meets the essential requirements of the Measuring Instruments Directive (MID) 2004/22/EC.  
MCS Approved for feed-in-tariff metering and vendor approved for AMR submissions,

<b>Environmental</b>	Temperature Range	-25°C to +55°C
	Ingress protection	IP52 to BS EN 60529

Meters are intended for installation in a class E2 electromagnetic environment and Class M1 Mechanical Environment according to 2004/22/EC Directive.

<b>Physical</b>	Terminal arrangement	BS 7856
	Main Terminal size	8.2mm diameter with 2 M6 pinch screw
	Terminal Construction	Solid brass double screw clamp
<b>Overall dimensions</b>	Including module	180H x 122W x 49D

Remember to order your seals and wire.

Sealing the terminal cover ensures security and safety.

Sealing pliers also available.

