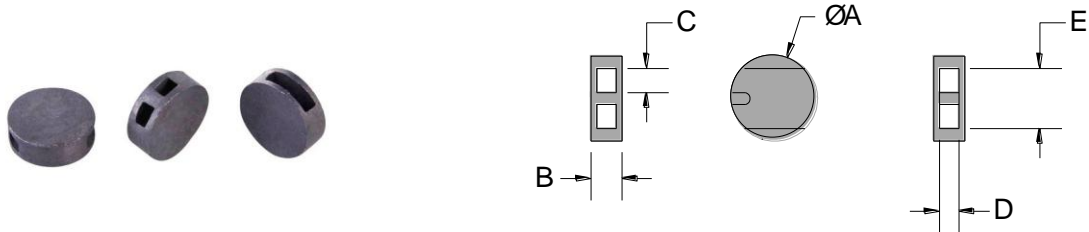


LEAD SEAL Data Sheet



The **Round Lead Seal** is designed with two parallel holes and a knot chamber. During fitting the wire or string is threaded through the two parallel holes and crossed inside the knot chamber before closing with the sealing tool to prevent slippage.

Technical Data

Recommended Applications

Gas, Water & Electric meters, Drums, Valves, Refineries, Post Bags, Cages, Lockers

Material

99.9% Refined Lead

Marking

Plain or Company name/logo embossed or debossed using sealing tool with engraved dies.

Sealing Tool

9 & 10mm SEALING-PLIERS supplied with plain 10mm dies as standard.

12.5 & 14mm SEALING-PLIERS supplied with plain 12mm dies as standard.

Reference	Size - mm	12.5MM	14MM	9MM	10MM
A	Diameter	12.5	14	9.0	10
B	Thickness	5.5	6.1	4.5	4.0
C	Hole W	3.2	4.1	2.4	2.5
D	Hole H	3.2	3.3	2.3	2.2
E	Chamber	9.0	11.0	6.3	7.0

Packaging

Standard Packaging : 1,000 seals/carton
 Carton Dimensions : 14cm x 19cm x 7cm
 Carton weight : 12.5/14mm - 4.0kg/carton
 : 9MM - 1.75kg/carton
 : 10MM - 2.5kg/carton